

A True Original



Artist rendering. Plans subject to change.

Doug Smith custom home at Croasdaile Farms

Construction has begun on this spectacular, craftsman style home by Graycliff Builders in one of the Triangle's most desirable neighborhoods, Croasdaile Farms. Graycliff Builders specializes in high-end custom homes, building just a few a year and giving every detail of each home careful attention. This home is a masterpiece in the works and well worth a closer look. Enjoy the comfort and luxury of a home built of the finest materials on one of the best homesites in the community; it is broad, level, on a cul-de-sac with lovely vistas and wooded views. Centrally located in Durham, Croasdaile Farms offers residents a quite retreat from daily life, and a very short commute to work; it is moments from Duke.

Four bedrooms, Four and a half baths, Library, Recreation Room, Three-Car Garage and Porches.
Estimated completion Autumn 2006. Estimated price \$1,350,000. Please call for information.





LIA  WILLIAMS

www.liawilliams.com
office: 919.913.2546

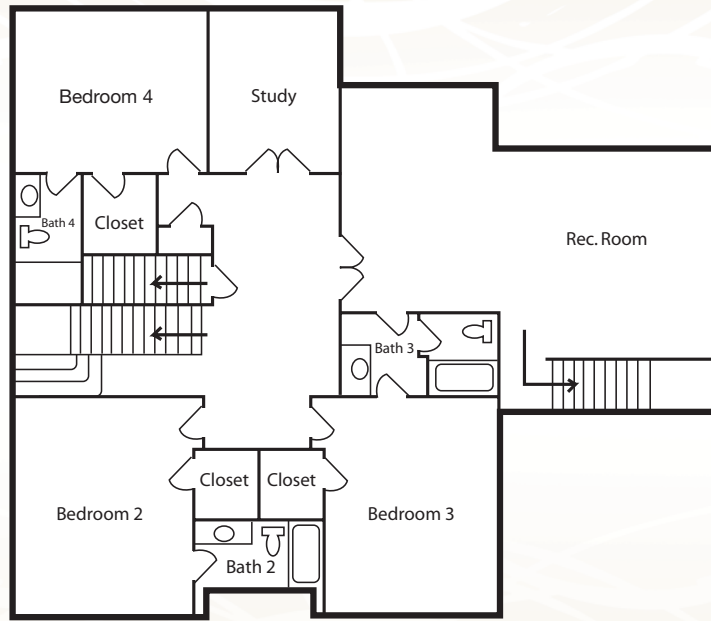
liawilliams@nc.rr.com
mobile: 919.604.5599



©2005, An independently owned and operated member of Prudential Real Estate Affiliates, Inc., a Prudential Financial company.

 Prudential is a service mark of the Prudential Insurance Company of America. Equal Housing Opportunity. 

Upper Level



Lower Level

